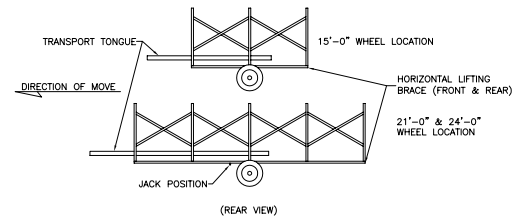
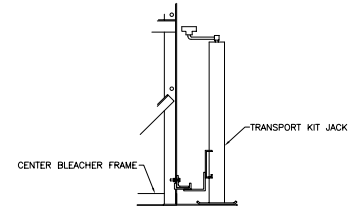


NOTE: ILLUSTRATION SHOWN WITH DOUBLE FOOT PLANK, RISER (ROWS 4 & 5), & CHAINLINK GUARDRAIL. PLEASE REFER TO ATTACHED SPECIFICATIONS FOR FEATURES INCLUDED WITH YOUR SPECIFIC BLEACHER.



JACK ATTACHMENT



PLACE JACK ON UNDER SIDE OF HORIZONTAL BRACE APPROX. 14"-18" AWAY FROM CENTER FRAME, AS SHOWN. BLEACHER SHOULD ALWAYS BE ON SOLID, LEVEL GROUND, AND BE STABILIZED TO PREVENT MOVEMENT WHEN USING JACK.

BuiltRITE
Bleachers.com

BuiltRiteBleachers.com
67 Canterbury Lane Southington, CT06489

SCALE: N.T.S.	APPROVED BY:	DRAWN BY: JLB
DATE: 3/8/05		
TITLE: 5-row preferred non-elevated transportable bleacher submittal		
CUSTOMER:	DRAWING NUMBER: SUB-1A02-0000	