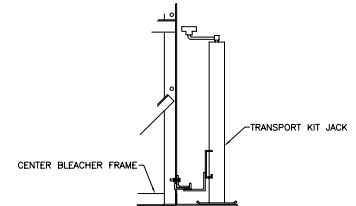



#### JACK ATTACHMENT



PLACE JACK ON UNDER SIDE OF HORIZONTAL BRACE APPROX. 14\"-18\" AWAY FROM CENTER FRAME, AS SHOWN. BLEACHER SHOULD ALWAYS BE ON SOLID, LEVEL GROUND, AND BE STABILIZED TO PREVENT MOVEMENT WHEN USING JACK.

**NOTE:** ILLUSTRATION SHOWN WITH SINGLE FOOT PLANK ROWS 2-3, & DOUBLE FOOT PLANK ON ROWS 4-5, RISER (ROWS 4 & 5), & CHAINLINK GUARDRAIL. PLEASE REFER TO ATTACHED SPECIFICATIONS FOR FEATURES INCLUDED WITH YOUR SPECIFIC BLEACHER.

			<b>BuiltRiteBleachers.com</b> 67 Canterbury Lane Southington, CT06489	
			SCALE: N.T.S. DATE: 3/8/05 TITLE: SUBMITTAL FOR 5 ROW NON-ELEV. TRANSPORTABLE BLEACHER CUSTOMER:	APPROVED BY: DRAWN BY: JLB DRAWING NUMBER: SUB-TA02-0000